

Annual Report 2017-2018

New Ark Play Association

Registered charity number: 1026751

New Ark Play



Adventure Playground,
City Farm & Eco Centre

**A safe, caring, adventurous environment for
everyone developing skills for life**



- Parent & Toddler Group • Eco Garden •
- Preschool Playgroup from age 2 years 9 months •
- Holiday and Afterschool Club • Play Support Service •
- City Farm offering Birthday Parties and Group Visits •
- Volunteering opportunities •



New Ark Opening Times

Term Time - Monday to Friday

Playgroup 09:00-15.00 for children aged 2yrs 9 months to 4 years

Play is a natural way of learning... Play makes life exciting, interesting and fun...Play is at the heart of everything we do at New Ark playgroup

Eco Centre 09:00-12:30

Our children that attend New Ark Playgroup learn through play using the Adventure Playground, Farm and Eco Centre. Pre-school children use the Eco Centre as part of their full days in preparation for going to school. In the summer term we offer Eco sessions for children due to start pre-school in the September.

Play Support Service 09:00 - 15:00 (Term Time)

In our play support service we offer specialist support for individuals and small groups with social, emotional and behavioural difficulties. With our support more children can be helped with their transition back into a school setting.

Parent and Toddler Group Every Wednesday term time only 13:00 - 15:00

Our parent and toddler group are weekly sessions for children aged 0-4 years, giving them the time to explore our eco centre and city farm with their family.

Farm (Open All Year) 10:00-12:00 15:45-17:30

All of the children at New Ark have the opportunity to visit our farm during session times. We also welcome group visits from schools, nurseries, playgroups and child minders, plus visits from individuals and families. Students can complete work placements for animal care courses. We run social mornings on Mondays and Wednesdays between 10am—12pm for adults with additional needs (£5.00 per session, carers and support workers are free). We also run free animal care courses for adults in conjunction with Peterborough City College. **Please call Carolyn between 10am—12pm weekdays on 01733 340605 to arrange a visit or to register your interest for one of our animal car courses.**

Playground 15:45-18:00 Term Time

8:30 - 17:30 School Holiday

During term time our afterschool playground is all about adventure play with activities such as digging, building, ball games, swinging and climbing; and other activities based around a range of creative arts and crafts. The children also have the opportunity to visit the farm.

During the school holidays our playground activities are very similar to term time and the children also get the opportunity to do baking in our kitchen, outdoor cooking, den building , water slides, messy play and more. By prior arrangement we can offer childcare between 8.30am-5.30pm. During summer holidays we run Eco sessions and Forest School for under 8s.

October Half Term: Monday 22nd October 2018— Friday 26th October 2018

Christmas Holidays: Playgroup - Last day Wednesday 19th December 2018

Playground - Last day Friday 21st December 2018

Playgroup and Playground all re-open from Monday 7th January 2019

Introduction to New Ark Play

We are an independent charity, officially called New Ark Play Association. We aim to provide stimulating play opportunities for all children, no matter what their age and background. Our facilities include a traditional Adventure Playground, an Eco Garden and a City Farm.

We are run by a Management Council of local volunteers from different connections to New Ark who all bring unique skills to New Ark.

We employ professional play and childcare workers, several of whom are Forest School trained. About 100 volunteers help with all kinds of jobs in the Adventure Playground, Eco Centre and City Farm, plus admin and fundraising.

We are registered with Ofsted and were rated "outstanding" in our last two inspections, the last inspection was in May 2013.

We keep charges as low as possible and try to ensure that lack of money does not prevent children from enjoying our facilities. We are partially grant-aided by Peterborough City Council. We are also supported by grants, fundraising events and appeals.

We hope you enjoy reading our Annual report and seeing the photographs and children's artwork which are throughout these pages.



Outdoor facilities at New Ark

At New Ark children can enjoy all kinds of play safely, under adult supervision, indoors and out, all year round. Our outdoor facilities include;

Adventure Playground

Many of the structures in our traditional adventure playground are handmade on site, using traditional building materials and discarded industrial parts. Children can ride our aerial runway, swing on a tyre, and play tag on our huge American swing. Alternatively, they can climb frames, roll down our hill, join a den-building team, cooking on an open fire and baking indoors whatever the weather.

Playground-goers explore risk in a controlled environment, while supervised by professional play workers, who know when to help and encourage, and when to step back to let children work things out for themselves. They get heaps of exercise, fresh air, contact with the natural world and all the benefits of play!



City Farm

We are the only City Farm in the Eastern Counties.

Many of our animals were rescued from owners who could no longer care for them. We try to rehome some of our smaller animals while others join our New Ark family. At the farm children and adults can see, touch and help care for small pets, poultry and some larger animals. They learn about nature, develop new skills and enjoy the responsibility of caring for animals in a supportive and caring environment.

We receive no Government funding for the farm and rely on donations to help us pay for food, bedding and veterinary care; and volunteers of all ages to help us care for the animals and maintain the farm.



Eco Centre

Our Eco Centre is 15 years old, having been officially opened by Warwick Davis in 2003. Over the years it has been used by hundreds of children for environmental and outdoor activities. The forest has grown a lot and every year we discover new species living in the pond and undergrowth. The children are very happy and become knowledgeable about trees, plants, birds and animals. The Eco staff are fully trained and are passionate about the environment and therefore pass on their enthusiasm to the children and all of our visitors. By the end of the year the children are physically confident and skilful in using tools, whittling a pencil or a whistle, making charcoal, pond dipping, bird watching, building a volcano and very good at playing with mud and water. Luckily we have waterproof suits so they can get as messy as they like!

This year, we have lost a long term member of staff, Debbie Knighton; we are very sad to see her go and wish her well for the future. Now Karen Payne is our lead practitioner and she will complete her Level 3 Forest schools training in December 2018. We are already benefiting from her newly acquired expertise and she is assisted by Emma Greenwood who has nearly completed her Early years level 2, the Playgroup staff also assist in the Eco Centre.

During the holidays Eco staff run sessions for the older children. We find that they enjoy all the same activities as the little ones but take them to the next level. We were lucky to have staff from Froglife to run sessions which were so enjoyable for the education of wildlife and the children loved it, we hope to continue these. As always there is a lot of maintenance work to do to keep the Eco Garden and Forest safe for the children. We have arranged for a tree survey to be carried out mapping all the trees on the whole site. Our storage wagon has been repaired and repainted thanks to a local firm of Cummins volunteers which we are extremely grateful. We have taken delivery of several loads of woodchip which has been spread on the forest floor and we have had a very kind donation of logs. Volunteers have helped with hedge cutting., nettle and bramble control, digging on the garden and cutting grass.



Play Support Service

New Ark's Play Support Service, which is only open during term time, uses all of New Ark facilities. This specialist service supports children who may have social, emotional and behavioural difficulties. Children who would benefit from this service includes those who:

- ◇ Are experiencing difficulties in the school environment.
- ◇ Have had exclusions or are close to permanent exclusion.
- ◇ Find access to the National Curriculum difficult.
- ◇ Would benefit from an alternative learning program

Sessions are planned to suit each child's individual needs and include building their confidence, self-esteem, communication and social skills. We encourage them to discover more about themselves and help to develop strategies to manage behaviour.

Children may attend full time or part time; for a few weeks or long term; they may have a school place or none. Our aim is to support them until they are able to return full time to a classroom environment.



Summary of Fundraising 2017-2018

We do a lot of fundraising here at New Ark and the majority of the donations that come in are through fundraising events that we hold on the premises and what we do at these events would not happen without the help of staff and volunteers which we at New Ark are eternally grateful.

Here is a snapshot of some of the fundraising events that have taken place over the last financial year and donations that have been received from supporters.

When was the event?	How was the money raised?	How much was raised?
Summer festival 2017	New Ark held a fete with stalls, refreshments fun and games for all the family . The Farm had petting , animal games and stalls	£1,311.66
Masked ball event 30 September 2017	Staff and friends attended a masked ball to raise much needed funds for improvements within the playground at New Ark.	£3,000
Barclays Bank	As part of the Christmas Bazaar Barclays kindly match funded what total we made on the tombola	£1,000
Open Day 2017	New Ark open to the public for refreshments, stalls and to show visitors around all of the site	£221.57
Christmas Bazaar 2017	New Ark opened the doors to a host of families and visitors to raise money with stalls, refreshments and Farm games with of course a visit from Father Christmas and his Elves.	£1,860.84
Easter Hunt March 2018	An annual event with a great turn out, the hunt was spread over the grounds of New Ark.	£2,324.20

Collection Box Appeal and private donations

Over the financial year of 2017, alongside the fundraising events that were going on at New Ark, we also had a number of collection boxes placed in local businesses for the customers to place their unwanted change in to help raise money for New Ark. Here is what has been donated for us:

DONATIONS

£1,000 Parent donation
£500 Ramsey charity shop

City Farm

We raise money for the Farm in a variety of ways to help pay for food, bedding and veterinary care. This included animal sponsorship, animal boarding, group visits, individual donations, social mornings and

Children's parties.

Animal Boarding - £75

Schools/Visits £1,885.50

Donations - £147.10

Parties - £450

Summary of Fundraising 2017-2018

(continued)

Easter Egg Hunt 2018 - New Ark raised a fantastic amount of £2,324.92 with the support of local families that attended the event. The majority took part in our Easter Treasure Hunt to win a chocolate rabbit as a prize. This is one of our key events and gets busier and busier every year. It was attended this year by Fiona Onasanya MP and Peterborough's Deputy Mayor Chris Ash who joined in the fun.



Children fundraising - The children that come to our adventure playground during the school term and during the school holidays came up with various activities to help raise funds for New Ark .

New Ark's Summer Festival - Our summer festival is an annual event which is manned by volunteers and staff, all unpaid, to enable the local community to come and take part in outdoor activities and current interests. Event title was Beauty and the Beast included Belle visiting the children, stalls, African drumming, treasure hunts and various stalls refreshments and activities for the family and local community .



The local residents at Bishops Close had a Christmas lights switch on. A great evening was had by all the attendants and they donated a huge £300. A big thank you to all of those involved.

New Ark's Open Day - New Ark held our Annual Open Day in October 2017. This was run to promote what New Ark is about. We raised funds through a children's tombola, a lucky dip and selling refreshments.

Christmas Bazaar - The Christmas bazaar is always one of our most successful events with a lot of family and volunteer support. In November 2017 staff and volunteers raised £1,860.84 through visits to meet father Christmas, cake sales (donated by our parents and staff), face painting, sweet treats, making Christmas cards and plenty of other children's stalls. At the City Farm the children and families enjoyed the day with the animals, stalls and activities.



Masked charity ball by Vix- star events — We teamed up for a masked ball evening at the Holiday Inn. Staff and volunteers dressed up together with other local businesses to raise essential funds for the improvement of our playground. We raised nearly £3,000 and a playground parent kindly raised funds to add to this total . We would like to thank all for their attendance and generosity and a good night was had by all.

Ramsey Hospital Charity Shop - Emma one of our Eco staff parents runs a charity shop at Ramsey Hospital and they raised and donated £500 for our farm to buy needed maintenance and supplies.

Events held 2017-2018





Upcoming Events 2018-2019

Below is a list of future fundraising and open community events that we have planned so far for 2018-2019.

If you as an active member of the community or as a parent to one or more of the children that attend New Ark can you offer any help to organise an activity, donate to fundraising stalls, bake for our refreshments stall, or anything similar?

Please contact New Ark on 01733 340605 or email us at newarkplay.office@gmail.com.

New Ark Open Day

6 October 2018 12 noon—2pm

Come and meet the New Ark Team and see what New Ark is all about! The playground, Eco Garden and Farm will be open, and there will be games and refreshments

Entry by silver donation

Christmas Bazaar

24 November 2018 12noon - 3pm

Come and visit Father Christmas and have fun on the playground, Eco garden and Farm. We will have stalls, games, refreshments and a grand prize draw.

Easter Egg Hunt

19 April 2019 11am-2pm

Come and join in the Easter Egg Hunt and have fun on the playground, Eco garden. We will have stalls and games, as well as refreshments.

Summer Festival –15thJune 2018

Bring your friends and families, they are all welcome to come and join in the fun at New Ark!

A review of 2017-2018 at New Ark

By Rob Brown, chair of the Management Council

“Could I start again with a huge thank you to all staff and volunteers for their continued hard work throughout the past year. Without this we would not be able to do what we do so well. We have continued to work within a tight budget and had some really good fund-raising events especially the Easter egg hunt that took place on Good Friday, long may these continue.

Over the year we have seen some staff leave and I would like to say thank you to them and wish them well embarking on their new adventures. On a positive note we welcome Simon who joined us in the admin office as our administrator.

Again, this year we have had some great help from BeNCH CRC

Community Payback Team who come in most weekends and do outside jobs for us, weather permitting.

One big change this year was moving the Support Service down onto the same site as New Ark, it is now in the garden with the service using a new wooden cabin. This was a task in its self, but we got there with a lot of help from Steve (committee member) and Neil (volunteer) who helped with preparing the foundation and helping with concreting.

Finally, could I thank my fellow committee members for all their help and support over the last year.

We are always looking for new committee members and also volunteers to help with gardening and ongoing maintenance jobs, If anyone would like to join please give us a call.”

Rob

Planning Ahead for 2018-2019

Our biggest project for planning ahead for the next year is raising funds long term. We have been in consultation with the Local authority and our funding is now being phased out over the next 3 years. We will have to meet the short fall at the end of this period.

Ways you can help within our community to make sure New Ark's future is secured

- Sponsorships from local businesses
- Donations
- Fundraising Events on behalf of New Ark
- Funding applications
- Time
- Resources and materials
- As our charity needs a wealth of people with different skills maybe you could join our Committee

What we achieved in the last year

We have purchased a new building for the support service and this is in full swing.

We have restructured within playgroup which is enabling cross skills, staff working within other areas of New Ark.

We have continued to engage with local schools and other organisations.

We went onto partnership with Peterborough City College to run free animal care courses to adults'.

What we would like to achieve over the next year.

Expand our Play Support Service by working with a greater number of local schools.

To continue to work with Peterborough City College to provide free animal care courses at the Farm.

Extend playgroup hours offering an early start and longer days.

Renovate the playground by applying for funding for essential works

To continue to support our local families by providing an essential service

Thank You..

To the individuals New Ark would like to take a moment to say thank you to all of the individuals that have kept New Ark going with their help and support through 2017/2018 by giving us their time. I am sure we may have missed individuals off this list but would like to thank every one of you we couldn't do it without you.

◇ Laura Anderson	◇ Jo Curphey	◇ Rebekah Knighton
◇ Mary & Alan Kemp	◇ Abigail Curphey	◇ James Payne
◇ Mr Mcsparron	◇ Heidi Peacock	◇ Serena Lee
◇ Charlie Greenwood	◇ Neil Peacock	◇ Mrs Calvert (playgroup)
◇ Jane Buck	◇ Jan Ruffles	◇ Sarah Beeton
◇ Caitlin Buck	◇ Cliffe Ruffles	◇ Carl Riley
◇ Donne Buck	◇ The Baldock family	◇ Mark Stuffins
◇ Helen Moles	◇ Hazel Greenwood	◇ Rebekah Brown
◇ Jane Carpenter	◇ Steve Milford	◇ Sandy Smith
◇ Amanda Parry	◇ Claire Duffy	◇ Kathy Smith
◇ Stephen Connelly	◇ Sarah Guest	◇ Sandy Snitch
◇ Vince Bicarino	◇ Enid Lynch	◇ Eleanor Waters
◇ Molly Setterfield	◇ Barclays Staff Sandra & Pauline	◇ Isabelle Waters
◇ Sally & Wayne Miller Molson	◇ Paul Riddler	◇ Clare & Sean Duffy
◇ Rob Brown	◇ Jane Carpenter	◇ Molly Fowler
◇ Migle Naseviciute	◇ Joan Ruffle	◇ Carol, George & Tracey Hallet
◇ Gina Cook	◇ Karrone Green	◇ Erin Lovett
◇ Chloe & John Davey	◇ Andrew Phoenix	◇ Emily Browett
◇ Justin Jackson		◇ Hannah Murthwaite
	◇ Nikki Miller	◇ Mark Harding
	◇ Denise Jinks	◇ Aaron Johnson
◇ Simon Fincham	◇ Jayne Davey	◇ Charlotte Moss
◇ Nikki Anderson	◇ Sam Brown	◇ Chris Welch
◇ Linda Wilson	◇ Laura Bellamy	◇ Emily Paskin
◇ Jen Faunt	◇ Carolyn Bellamy	◇ Dave Wilson
◇ Lisa Paterson	◇ Monica Fincham	◇ Neil & Heidi Sansby
◇ Linda Fisher	◇ Debbie Knighton	◇ Bishops Close residents
◇ Jodie Watson	◇ Emma Greenwood	◇ Karolina Calak
◇ James Wallace	◇ Geoff Griggs	
◇ Elisabeth Buck	◇ Karen Payne	

All staff

Thank You..

To the organisations

New Ark would also like to take a moment to thank all of the organisations that have helped us in the last year with general help around New Ark and also organisations that have donated prizes to help raise fund on our event days.

◇ Peterborough City Council

◇ NCS

◇ Bowmer and Kirkland

◇ Cummins

◇ Sainsbury's (Oxney Road)

◇ Nene Gate School

◇ COPASS

◇ P R C Engineering Department

◇ M.J. Ruffles & Co

◇ Barclays

◇ Vision For Education

◇ Tesco

◇ Key stall, Peterborough Market

◇ Princes Trust

◇ The Cresset

◇ Activity World & Toddler World

◇ Big Sky

◇ Bounce Trampoline Park

◇ Burghley

◇ Laser Force

◇ Sainsbury's

◇ AG Barr

◇ Granville M I Pharmacy

◇ Tesco / Groundworks

◇ Perkins Engines

◇ JJ Treework

◇ Market Key Stall

◇ FrogLife

◇ Newark Hill Academy

◇ African Drummers

◇ B&Q

◇ BeNCH CRC Community

Payback

◇ PPV Solutions CCTV

◇ M. Rsalani—Mosaics

◇ Princes Trust





Recently we asked for reviews from parents, guardians and volunteers on what they think about New Ark.

Here is what they had to say!

Haley Cockerill

Want to say a massive thank you for such an amazing experience. We booked New Ark for our daughters 3rd birthday and from start to finish they were fantastic. Particular thank you to Carolyn and Karen who made all the children feel at ease, made the party flow and were lovely when things over ran slightly. Even more magical was the themed treasure hunt and balloon animals for all the guests. From Toddler to teen all commented what a fab time. Thank you x

Kate Michael - 5 star

..New Ark offers children a unique and original opportunity to engage in outdoor and indoor play activities mixing with lots of different children in a safe environment with qualified and highly experienced staff. All the staff interact with the children at their own level and provide quality care for the children lucky enough to attend New Ark.

Kerri Nicholls

Took my 3 boys today for the first time age 10 months, 5 yrs and 8 years there was something for all of them they had a great time. Can't believe I've never heard of this place before, Came home filthy but that's part of it.... note to self - next time put them in older clothes 😊



"Sabrina Marie Donnelly 5 star

Thank you Carolyn for our visit today with the preschool it was great fun and a lovely way to spend the morning. Also a real bargain at £3.50 per child. We will definitely be coming again with the new kiddies in the new term

Brian Groom

_Another great week at Newark well done to all the team and there are many THANK YOU XXX



Trustees and Employees

Board of Trustees

- ◇ Rob Brown (Chair)
- ◇ Lisa Sachse
- ◇ Jo Curphey
- ◇ Paul Ridder
- ◇ Karen Maycock
- ◇ Claudia Butler
- ◇ Steve Milford
- ◇ Sarah Beeton

Employees

Playgroup

- ◇ Nikki Anderson (Manager)
- ◇ Linda Wilson (Supervisor)
- ◇ Linda Fisher (Supervisor)
- ◇ Denise Jinks
- ◇ Jayne Davey
- ◇ Jen Faunt
- ◇ Jodie Watson
- ◇ Lisa Paterson

Play Support Services

- ◇ Sam Brown (Manager)
- ◇ Laura Bellamy

Maintenance/ Cleaning

- ◇ Geoff Griggs
- ◇ Kelly Martin
- ◇ Laura Bellamy
- ◇ Monica Fincham (Relief Cleaner)

Playgroup - Eco Centre

- ◇ Elisabeth Buck (Manager)
- ◇ Debbie Knighton (Supervisor)
- ◇ Karen Payne
- ◇ Emma Greenwood

Farm

- ◇ Carolyn Bellamy (Manager)
- ◇ James Wallace
- ◇ Chloe Davey

Playground

- ◇ Sam Brown (Manager)
- ◇ Nikki Anderson (Manager)
- ◇ Jodie Watson
- ◇ Laura Bellamy
- ◇ Linda Wilson
- ◇ Denise Jinks
- ◇ Katie McIntyre (Relief)

Administration

- ◇ Charlotte Griggs
- ◇ Simon Fincham



Eco Centre and Toddler Group Report

By Elisabeth Buck MBE, Eco Centre Manager

Eco Centre - New Ark Eco Centre, garden and forest are now well established, having opened in 2003. All of our New Ark pre-schoolers enjoy an Eco session each week throughout the year. Our children are knowledgeable about the environment, know all about the changing seasons and the wildlife that lives in the garden and forest. They especially enjoy bug hunts, so we are looking forward to using the new bug hotel and insect area, created recently by the Eco staff.

We had a lot of work done on our trees, which need to be monitored regularly for safety and this year, 2 were cut down and 2 willows reduced by half, so that left a lot of woodchip, tree trunks and logs. The staff have used every bit to improve our forest area!

Not only do we have the new bug hotel, but there is a newly built sheltered seating area under the elm tree. Round the bug hotel we have sown wild flower seeds to grow flowers to attract more insects. The children worked hard to spread the woodchip on the forest floor.

There is always lots to do to keep the area safe and exciting for the children to use. We are planning a refurbishment of the pond, rebuilding our straw house and repainting our mural boards, later this year. As well as redevelopment tasks, there is always ongoing maintenance, like removing nettles and brambles, weeding, gardening and weather proofing the wooden benches. Much of the work is done by the children, but a lot they can't do, so we always welcome volunteers and work parties to help with these tasks!

During summer holidays there are Eco sessions for school age children, which are always popular. Like the little ones, they enjoy the mud kitchen, digging for treasure, water play, bug hunts and cooking fires. They are always happy to be outside in all weathers.

Our Eco staff, with Early Years and Forest School training, all love the outdoors work and this year we have welcomed a new member of staff, Emma Greenwood, who has started her Level 2 Early Years training. She and Karen Payne are doing Forest School training too. New Ark Eco can only work successfully because of the dedication and enthusiasm of the staff so thanks to all of them!



Toddler Group - We meet on a Wednesday afternoon 1pm-3pm in the New Ark Eco Centre. It is a friendly and sociable group, for carers and pre-school children. Children have access to all of the Eco outdoor area and the City Farm. Lots of friendships are made, not only between the adults, but the children too.

Starting playgroup is much easier for children who have attended New Ark Toddler Group regularly because they are already used to playing with others, sharing and taking turns. You do not have to come every week and you do not have to arrive at 1pm - just come when you are ready and stay for the time that suits you and your child! All pre-schoolers and their parents are welcome!

Nature & Nurture Café!



We run a MONTHLY Nature and Nurture group in the Eco centre and Farm

These sessions are FREE and are for 0 –5 year olds

The first session will be on Wednesday 10th October at 1pm until 3pm and once a month thereafter.

We have been given money through the 'bags of help grant ' from TESCO and hope to deliver it by using our very qualified staff here.

The aim of the group is for the children and their parent/carers take part in listening to a story and having the chance to take part in the activities which will be linked to the learning.



Playgroup - A Holistic Picture

The value of outdoor play in all weathers.

We recognise here at New Ark that the outdoors we provide is a very different and contrasting environment to the indoors, by providing this experience we are able to challenge how children communicate and in some cases, provoking differences in children's behaviour.

Learning through play is what we do best at New Ark Playgroup

Planned and unplanned opportunities- making most of play whatever the weather.



Snap shot of the playground



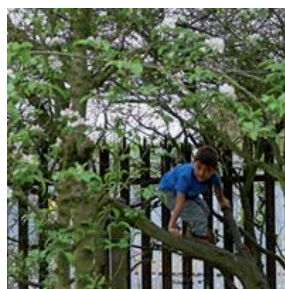
Tyre swing
and big
slide



PEEK-A-
BOO



Roly Poly



Tree
climbing
and
Working
together

After school and Holidays



Chilling in the
sun on the
banana board



Water
slide



Play Support Service Report

By Sam Brown, Play Support Service Manager

For those of you that are new to New Ark and reading this magazine for the first time, you may be wondering what the support service is?

We offer an alternative curriculum for children that are experiencing social, emotional and/or behavioural difficulties and finding the school environment difficult to cope with. Working with small groups of children we offer an alternative outdoor learning curriculum. Our sessions run during term time, Monday – Friday from 9am until 3pm.

We set up our service in December 2002 and originally rented a building called St Michaels, this is currently owned by the scouts and situated adjacent to New Ark. During 2017 talks were held with representatives from the local scout's group about potentially selling this building and we were asked if we would be interested in purchasing it. Immediately we started to actively investigate the many different opportunities to try and raise the significant sum of money needed to buy it. Also, as part of our plans we looked at the possibility of expanding New Ark's main building and building a separate provision, closing our service was not an option. We did go through months of worry but eventually a decision was made and in March 2018 our new wooden building was built. We were unsure how the children may cope with the change as it was smaller and very different, but I can say that it has been a positive move for all our children and they have adapted well. You can now find us next to the environmental garden and our future is to continue to offer our unique service to many other children that struggle in school for many more years to come.

We do have a referral process for children from Key stage 1, 2 and 3 and this can be made directly by schools or by other agencies. We offer both short or long-term placements and we can also arrange tutoring to take place at New Ark, tutors are supplied by a company called Vision for Education. For children that are either on the verge of exclusion or excluded we can offer full days which would include part tutoring. Communication is paramount therefore we work very closely with the nominated key person making the referral, we provide written reports, attend any meetings that requires our presence, when needed contribute evidence to help with completion of education, health and care plans and if a child is moving on to a new school we will attend and help the child through their transition stages.

Over the last twelve months some of the activities that the children have recently enjoyed are clay work, painting, cooking, engaging in many different farm tasks, bug hunting, learning about nature, physical activities on the playground, discussions around our British Values, celebrating diversity and learning about ways to express their feelings in a positive manner. Our curriculum is based on the outdoors incorporating the Eco garden, city farm and adventure playground.

Finally, I would like to say a huge thank you to my team of staff who remain committed and who are very hard working. Thank you to all those that have supported us with our move and helped us throughout the process.

Farm Report

By Carolyn Bellamy, Farm Manager

New Ark's City Farm continues to be a popular part of the community attracting visitors from not just the local community but the surrounding areas. The farm offers a unique service supporting local schools offering alternative provisions for students who have Social, Emotional and a wide spectrum of behavioural needs. As well as providing the children who attend New Ark the experiences of handling small animals they can also develop life skills while learning to care for them.

We continue to support college students from Peterborough Regional College providing them with opportunities to experience work on a City Farm and complete their Animal Care qualifications.

Over the last year we continue to have the valued support from the Princes trust and NCS groups of young people who work extremely hard to complete projects that improve the appearance of the farm. Also we are very grateful to the Ramsey Hospital Charity Shop for another donation of £500 towards the costs of the farm.

BeNCH CRC Community Payback undertake many hours of unpaid work which makes a huge difference to New Ark to complete essential maintenance jobs to keep the site running. There are always lots of repair and maintenance jobs at the farm and we would love to hear from any Handymen (or women) who could come and help with large or small jobs.

We have a number of adults with additional needs who enjoy our social mornings on Monday and Wednesday between 10am and 12pm. We are now also running free animal care courses for adults, which have proved to be very popular.

We hope to work with the City College to provide a Small Animal Care Course which provides a qualification to any student and also will bring some much needed funds to the farm.

Perkins Engines are an extremely helpful group to not only the farm but the whole site. We always have a list of jobs which will ensure the future of the farm and New Ark continues.

I would like to thank all of our valued volunteers who give their time and energy each week to care for the animals. I would like to say a huge thank you to the donations given by our volunteers and visitors which we could not do without.

James Wallace—Farm Assistant

"Hello, My name is James Wallace. I am the Farm Assistant I work with Carolyn and my job is to help take care of the animals. I also keep the Farm tidy and assist anyone who comes to the farm. It is always busy and there is always something to be done and I am always happy to help. I started at New Ark City Farm when I was doing my Work Experience as part on an animal care course. I then volunteered for a while until I received funding from Shaw trust so I was able to get a job. New Ark now employ me part time on the farm. I enjoy working at New Ark as it is a great job and everyone is so friendly."

Migle Naseviciute—Farm volunteer

"Hello .. My name is Migle Naseviciute, although I am known as Mina by some. My journey with New Ark City Farm stated during August 2016, when I attended the NCS (National Citizen Service) for my social action project. Due to the amazing team and friendly environment at New Ark it has sparked a new interest for me and led me onto doing a Level 2 Animal Care course at PRC which I continued to study and moved onto the higher level after the first year. I chose the farm as my work placement for both levels and volunteered for two years in total so far. I hope I am able to do so. New Ark is an amazingly friendly and comfortable space to work in with a variety of different animals to care for. I hope to continue helping out in the future "

What We offer at The Farm!



- ◆ We can provide care for your animals on our city farm.
- ◆ We offer space for indoor and outdoors teaching.
- ◆ Come and explore our woodland/sensory play area or adventure playground.
- ◆ Group visits where children can see, groom and feed the animals. Visits are £3.50 per child - for a 2 hour visit. All year round.
- ◆ Ideal for schools, preschools, special needs groups, holiday clubs, parent and toddler groups, cubs and brownies and other children's groups.

If you're on holiday, why not treat your pet to a holiday too?

For a small daily fee of £1.50 per night, New Ark can board your animals with us while you are away on holiday. We can care for guinea pigs, rabbits and chickens.

Please call Carolyn Bellamy between 10am-12 noon on **01733 340605**.

Birthday parties with a sense of adventure at New Ark!

You can:

- ◆ Decorate our function room using your own theme
- ◆ With full use of our kitchen you can bring party food and cake
- ◆ Play party games

Your guests can:

- ◆ Explore our traditional adventure playground
- ◆ Feed and groom the animals on our City Farm
- ◆ Take part in a treasure hunt in our Eco garden



£90 for up to 10 children, additional children £7 each and parents free. No hidden charges.

Please call Carolyn between 10am—12pm weekdays on 01733 340605 to

Arrange a visit, party or animal boarding.



New Ark Christmas Bazaar

24th November 2018

12 Noon - 3pm

Festive Activities include



Children's tombola



Meet Santa and his helpers



Chocolate tombola



Treasure hunt



Gift tombola



Biscuit decorating



Visit the animals on our farm enjoy the games



Hot snacks and refreshments

For further details please visit our;

Facebook page www.facebook.com/newarkplay

Our website www.newarkplay.com



Join in with the fun at New Ark!

- School holiday play sessions
- All day childcare in holidays
- Eco sessions (Forest School)
 - Afterschool play sessions
 - Parent and toddler group
 - Preschool playgroup
- Nature Nurture Cafe session
- Children's birthday parties
 - School/preschool visits
 - Play Support Service
- Farm adult social mornings and free animal care courses
 - Volunteer opportunities for individuals and groups

Find out more at www.newarkplay.co.uk



Newark Play Association Ltd

Hill Close (off Reeves Way), Peterborough PE1 5LZ

Tel: 01733 340605 **Email:** newarkplay.office@gmail.com

Registered charity no 1026751

